



2WD ELECTRIC





DISCLAIMER

All information on this document is subject to change at the sole discretion of Kraken RC, Inc. for up-to-date product information, please visit krakenrc.com for the latest updates.

ATTENTION

Please read this manual in its entirety and observe applicable suggestions and recommendations. Failure to operate the product correctly may result in damage to the product, personal property and cause serious injury.

WARNING

VESLA.5 is recommended only for professional or advanced RC drivers.

Failure to follow all instructions can lead to damage to your vehicle, property damage and bodily injury or death.

CAUTION

Making modifications to your car not specified in this manual may void the warranty and cause your vehicle to malfunction.

VESLA.5 is a remote control vehicle operated by radio frequencies. Please be aware of radio interference in your area or you may lose reception. Always be aware of your surroundings while driving VESLA.5. We highly recommend using a Kill Switch which can be purchased from Davesmotors.com. A Kill Switch will allow you to "kill" your engine remotely should you lose control of the vehicle.

- Never run your vehicle on the street where people are present
- Invest in a Kill Switch
- VEKTA.5 battery box is not waterproof, avoid running in water
- Never run your vehicle with low transmitter batteries
- Invest in a high quality radio transmitter and batteries
- Always turn off engine first, then receiver, then transmitter
- Inspect your vehicle after each run and perform maintenance on the vehicle when necessary



KRAKEN RC LIMITED WARRANTY (USA)

VESLA.5 is warranted to be free of defects in material and workmanship. This warranty does not cover damage due to normal wear and tear, user error of assembly, installation, user modifications and after-market hop ups used. This warranty is not transferable. Kraken RC will, at our discretion, repair or replace products or parts, provided our inspection indicates that an original defect exists. Kraken RC reserves the right to replace any product or part which is no longer available with a product of comparable value and function. If Kraken RC determines that the repairs or replacements are not covered under warranty guidelines, there could be a charge applied for repair and return shipping charges.

KRAKEN RC LIMITED WARRANTY (USA)

Please return product to your local dealer where the purchase was made. Kraken RC assumes no responsibility for Kraken RC products sold internationally by online retailers.

THANK YOU!

Kraken RC would like to thank you for purchasing the VESLA.5. Only through hard work, great investments, and time were we able to bring this vehicle into reality. The VESLA.5 is the product of our passion and joy for our RC hobby and we are so grateful to be able to share our dream with you. We wish you many hours of fun and hope that the VESLA.5 brings you miles of smiles.

Happy Bashing!

Team Kraken

TABLE OF CONTENTS

Introduction [5](#)

ESC Programming and radio adjustments. [6](#)

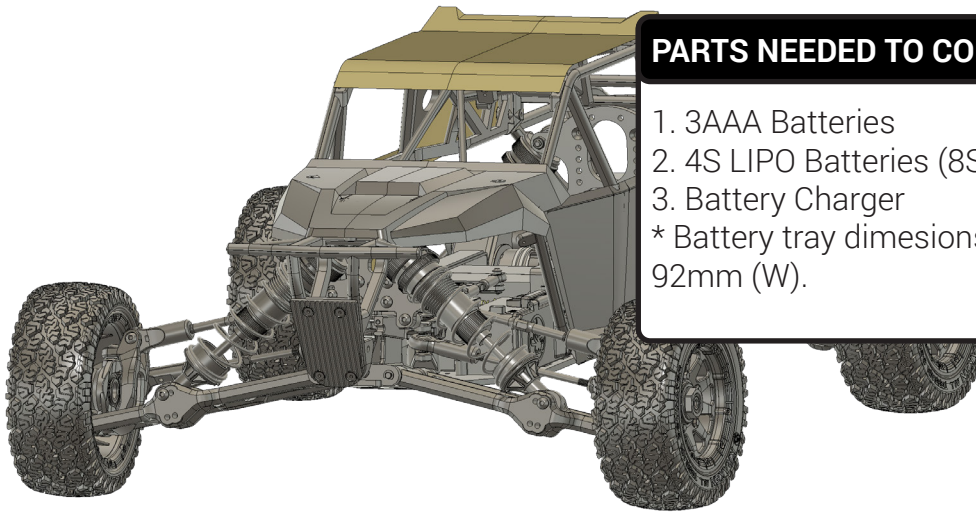
Slipper Gear Maintenance [8](#)

Shocks Maintenance [11](#)

Differential Maintenance [17](#)

Roll Cage Assembly instructions [21](#)

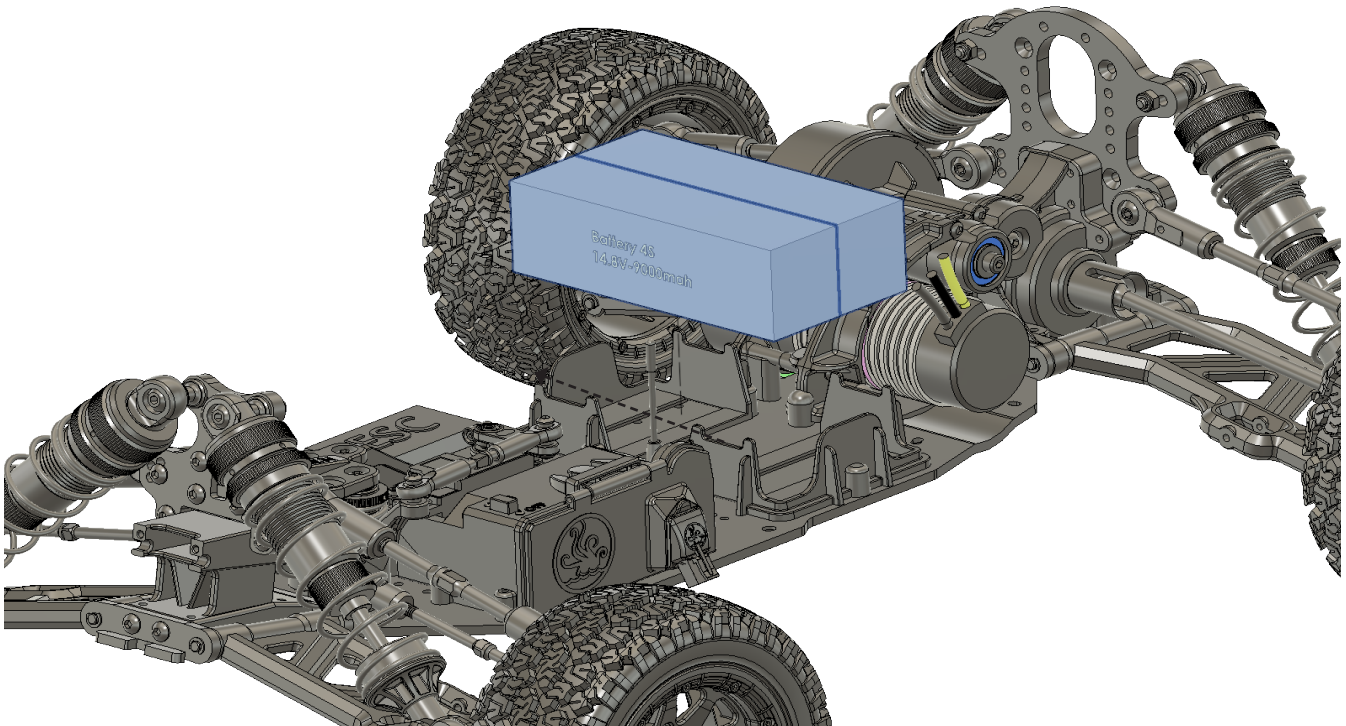
INTRODUCTION



PARTS NEEDED TO COMPLETE:

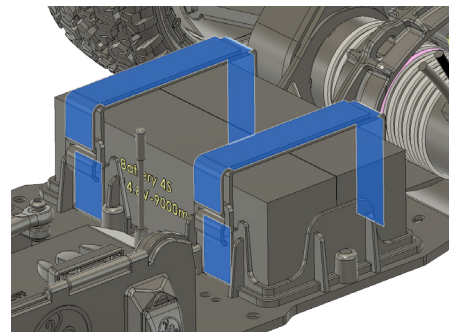
1. 3AAA Batteries
 2. 4S LIPO Batteries (8S) Set of two*
 3. Battery Charger
- * Battery tray dimensions 160mm (L) x 92mm (W).

REMOVE THE ROLL CAGE AND INTALL YOUR LIPO BATTERIES



1. Before you start, please ensure that your vehicle is lifted and the wheels are off the ground. For extra safety, program your ESC outside.
2. Locate the serial cable and attach it to the ESC's plugs (Red to Red and Black to black).
3. Install your LIPO Batteries with the leads on the opposite end. Ensure that any cables are not pinched.
4. Secure the batteries with the battery straps before operating.

Watch our step-by-step instructional video here - <https://www.youtube.com/watch?v=6z7VS5UZCYM>



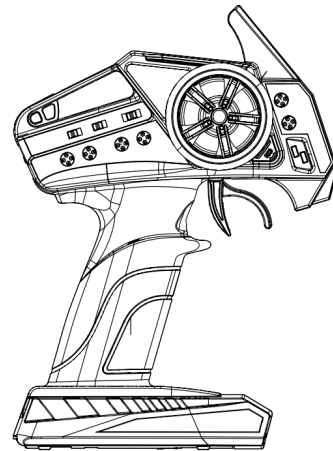
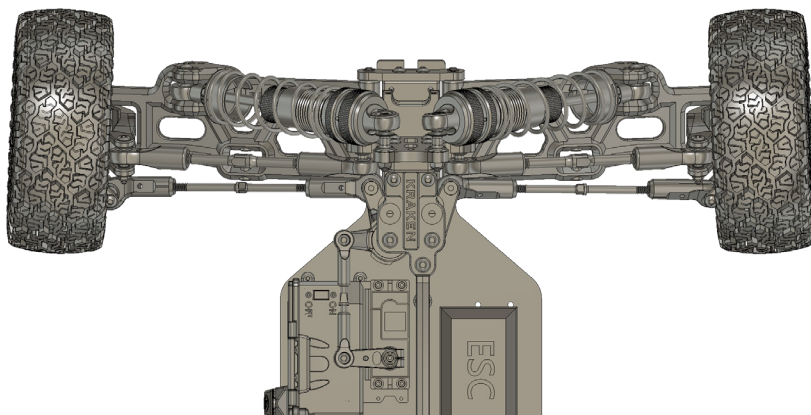
ADJUSTING STEERING AND THROTTLE TRIMS

1. Center the tires by adjusting the steering trim. Use subtrim if necessary (see your transmitter's instruction manual for further direction).

If steering is not in the desired neutral position after binding, and steering cannot be centered using trim and subtrim, please follow these tips:

- (1). Reset trim and subtrim to set to its neutral factory settings.
- (2). Remove the servo horn and reinstall.
- (3). Retrim as needed.

1



2. Make sure your receiver and servo are turned on and check that they are in neutral position. Use the diagram above as a guide for the position of the throttle/brake horn.

2

ESC PROGRAMMING

IN 7 MINUTES!

Watch our step-by-step instructional video here - <https://www.youtube.com/watch?v=6z7V-S5UZCYM>

For quick and easy programming get the Hobbywing LED ESC programming card - <https://tinyurl.com/mu8yndjs>



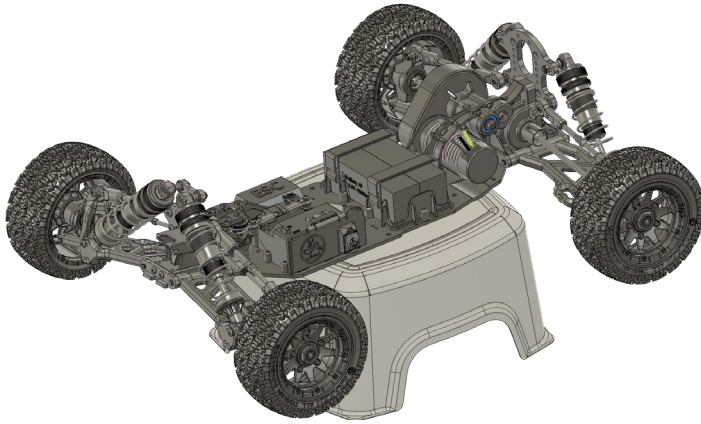
HOBBYWING LED Program Card

VESLA.5



ESC PROGRAMMING

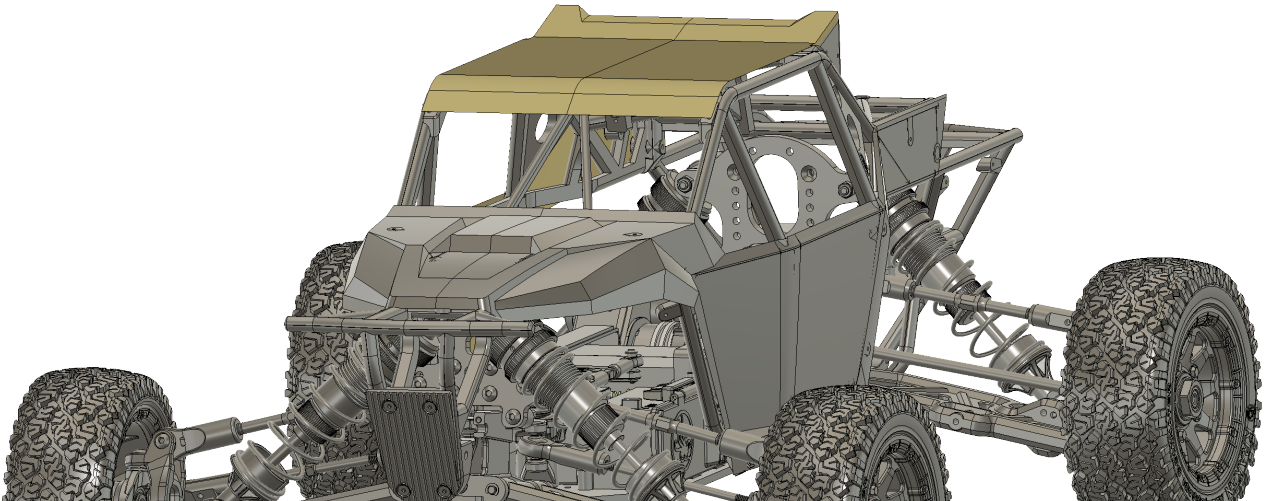
1



ESC Manual -<https://tinyurl.com/2wu2tpce>

Before programming, please make sure that the vehicle is off the ground and the wheels are free spinning. You can prop up the vehicle on a stool as pictured.

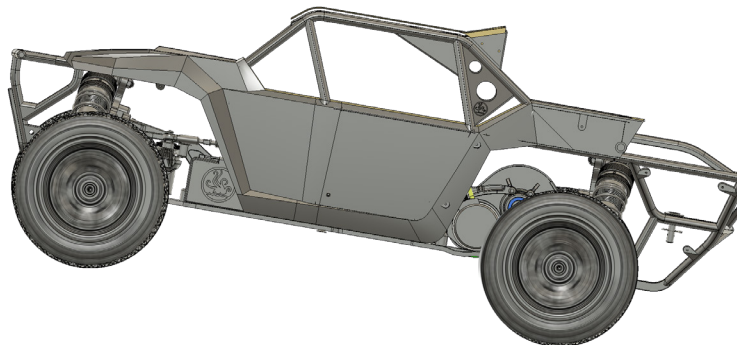
2



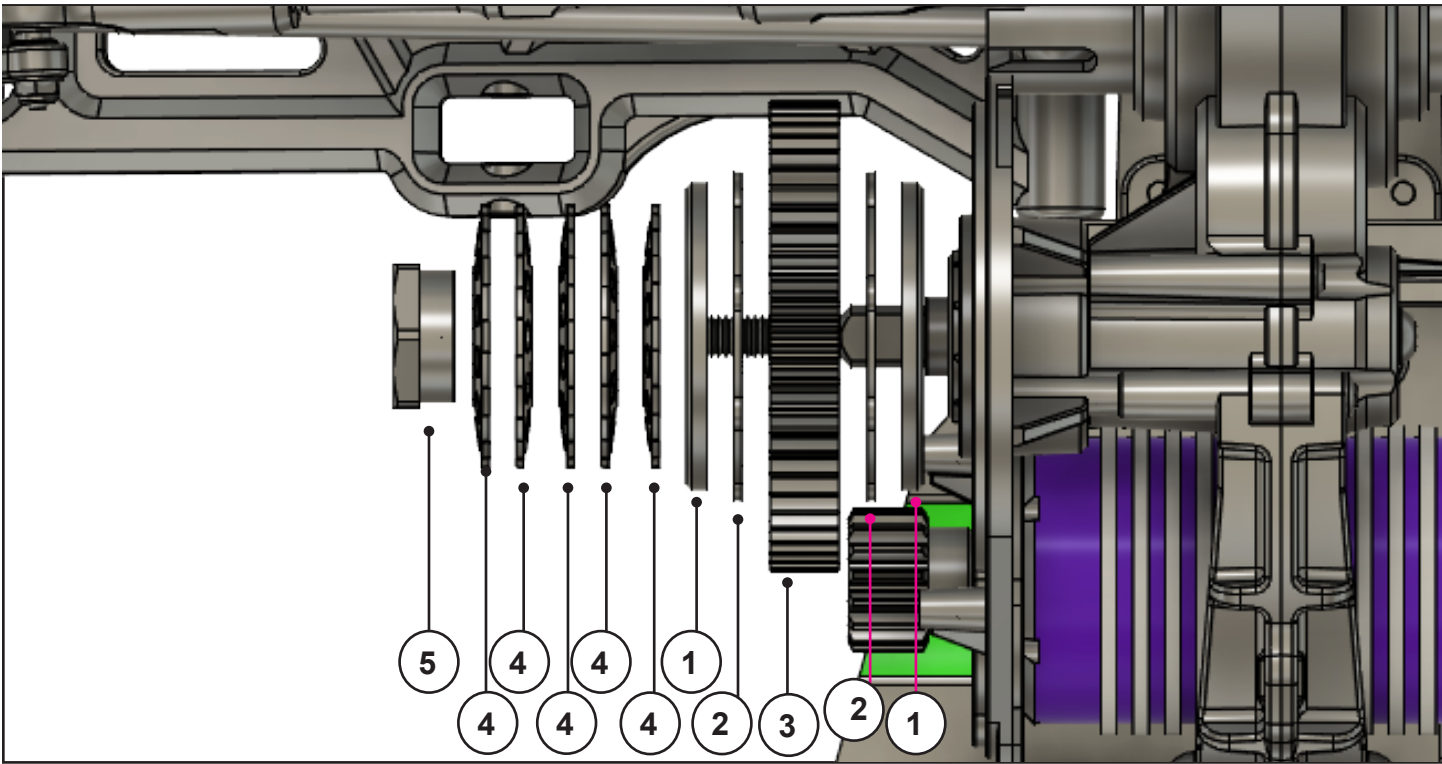
2. Attach the roll cage

3

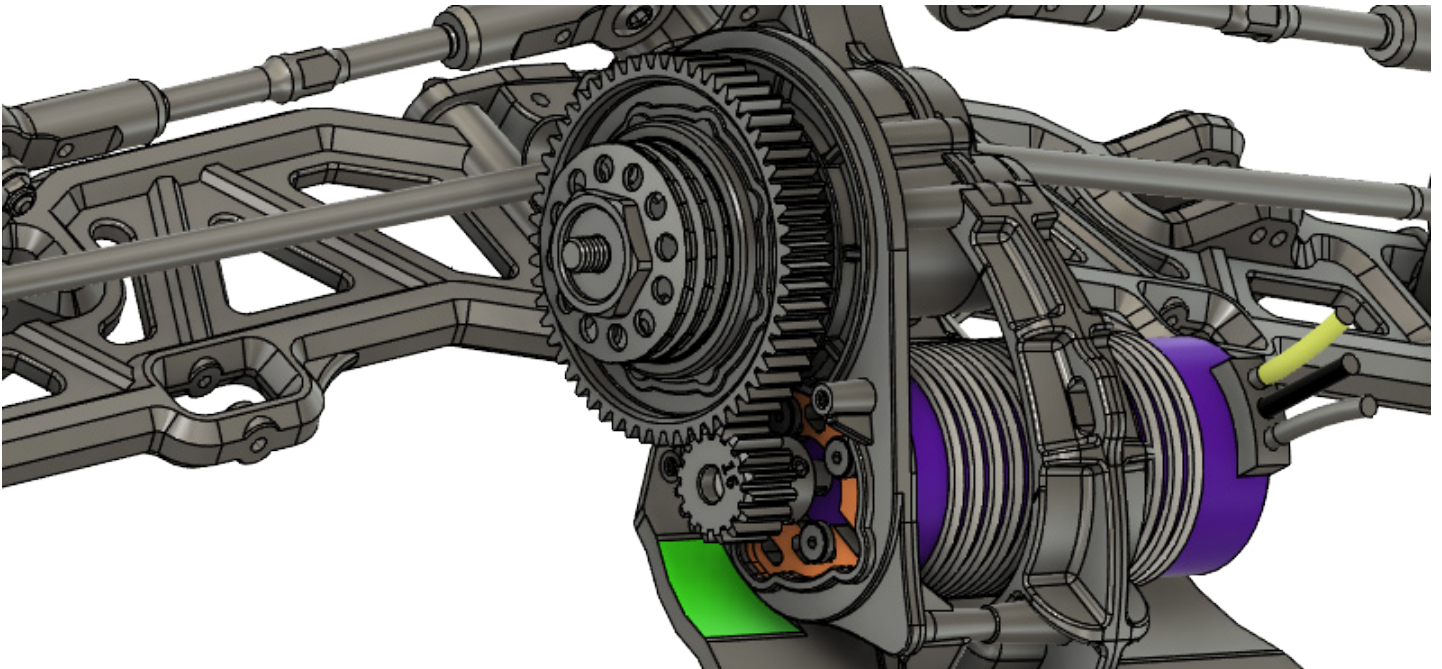
3. When you feel that your vehicle is ready, you can now go for a test drive. Operate the vehicle in an open space away from traffic and people. Drive slow at first to make sure everything is working correctly



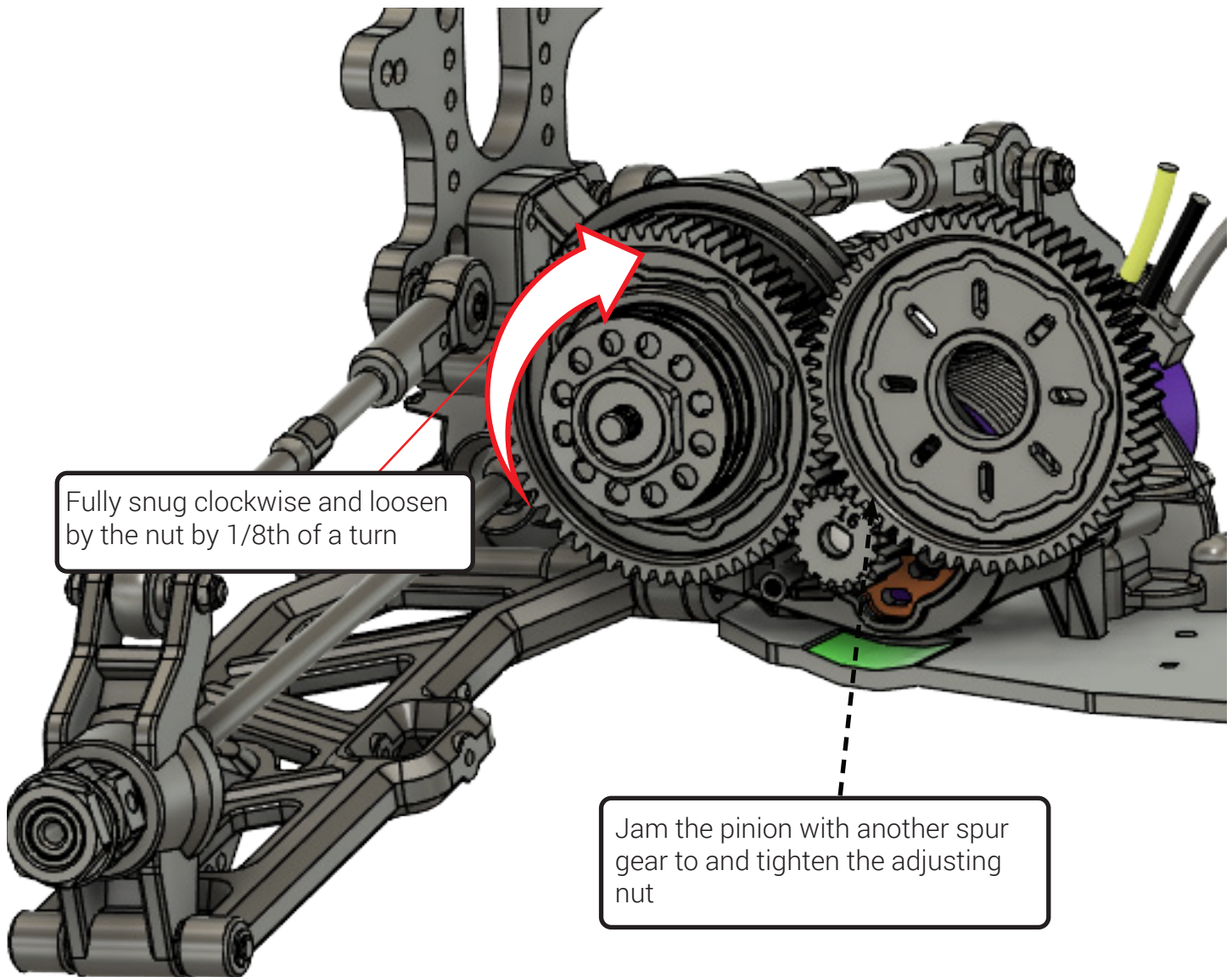
SLIPPER GEAR MAINTENANCE



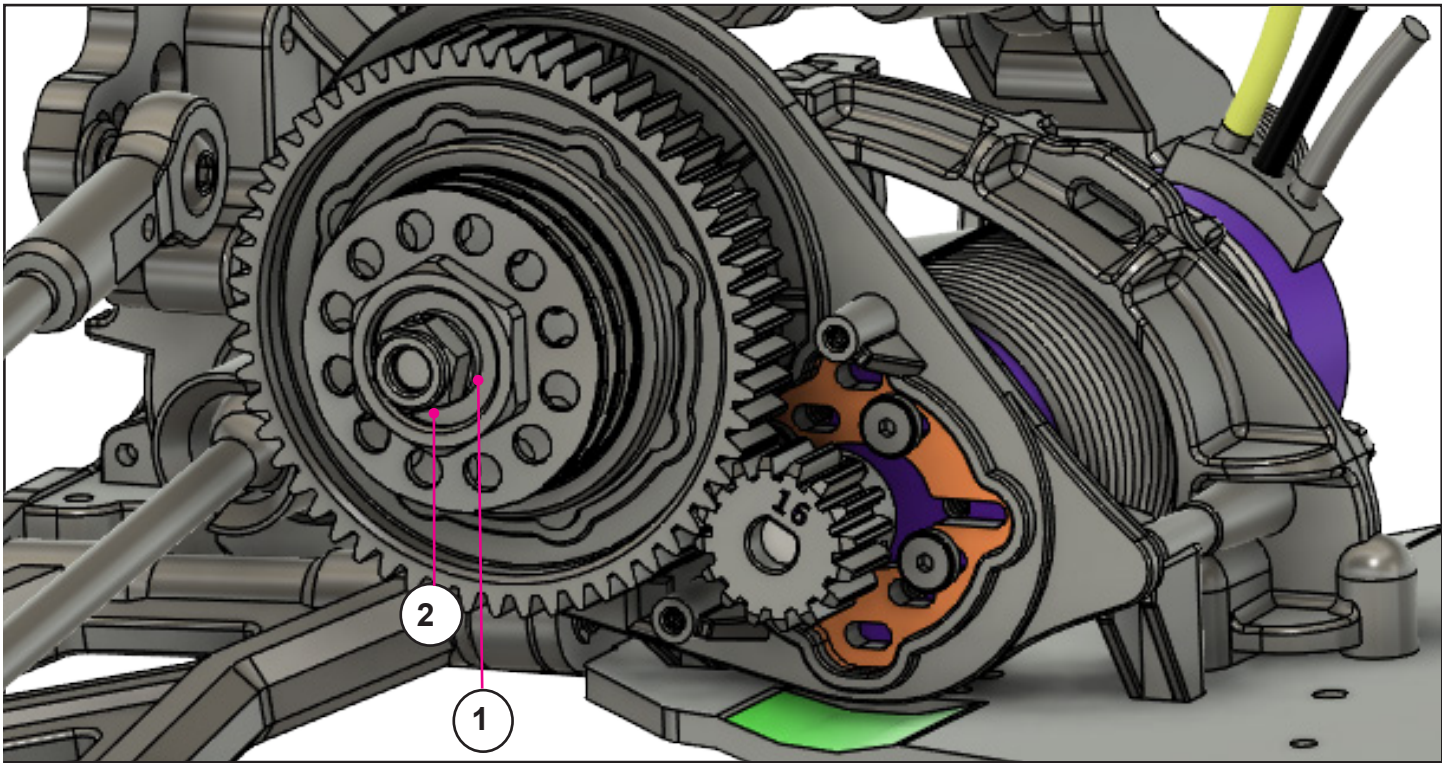
Assembly	Item Number	Name	Quantity
1	KVS425	SlipperDisk	2
2	KV4414	KV5-SlipperPad	2
3	KVS423	SlipperGear, m1.5 T57	1
4	KV3306	KV5-DiskSpring 50x25.4x1.5	5
5	KVS463	SlipperAdjustingNut	1



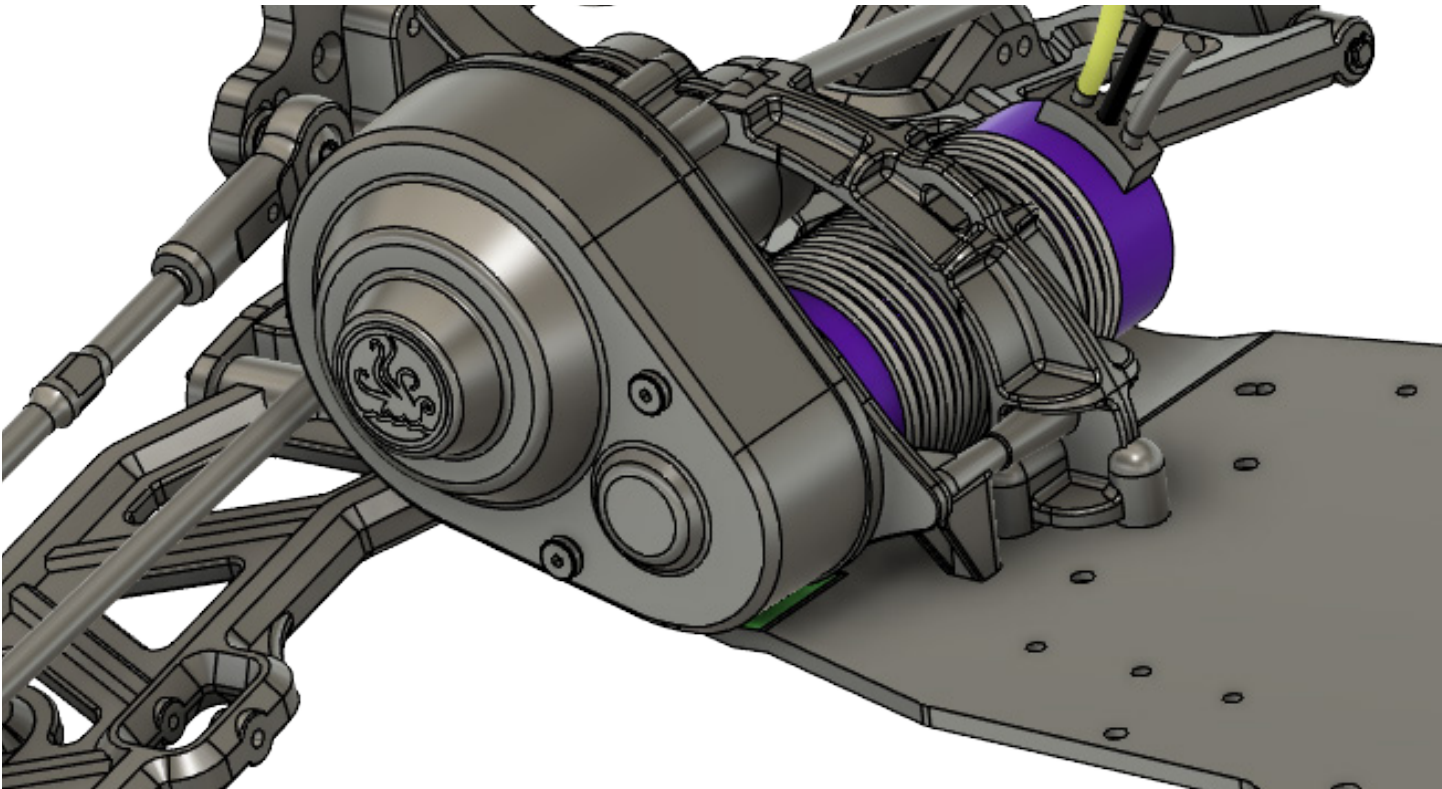
SLIPPER GEAR MAINTENANCE



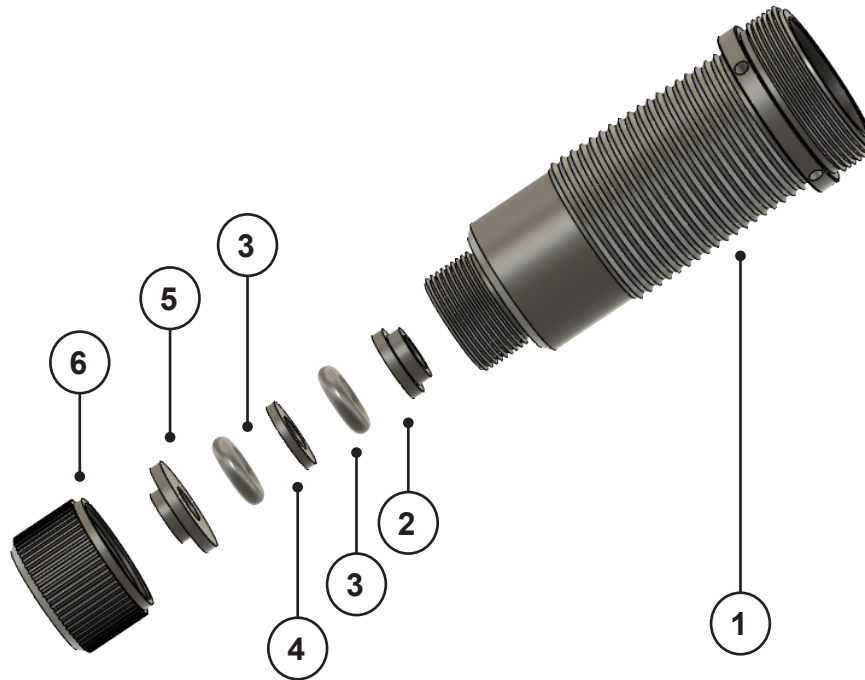
SLIPPER GEAR MAINTENANCE



Assembly	Item Number	Name	Quantity
1	3300089	WasherS8x15.6x2.5	1
2	KKR412012	LockNut080	1



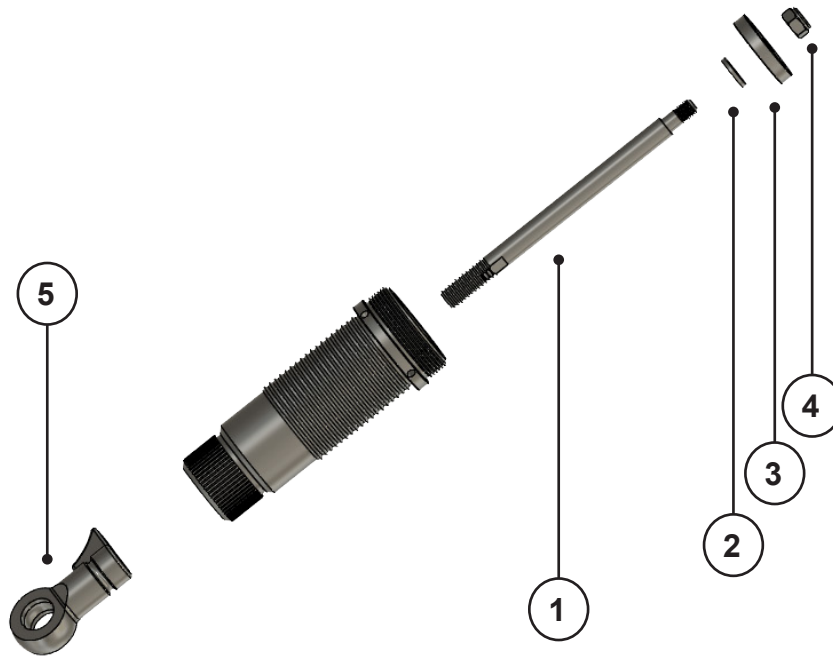
SHOCK MAINTANENCE



Assembly	Item Number	Name	Quantity
1	KVS444	ShockBody	1
2	KV8853	KV5-ShockShaftGuide	1
3	KV3303	ORing8x4(NBR70)	2
4	KV8852	KV5-Shock-BackUpRing	1
5	KV8856	KV5-ShockShaftGuideA	1
6	KV5559	KV5-ShockSealCap	1



SHOCK MAINTANENCE

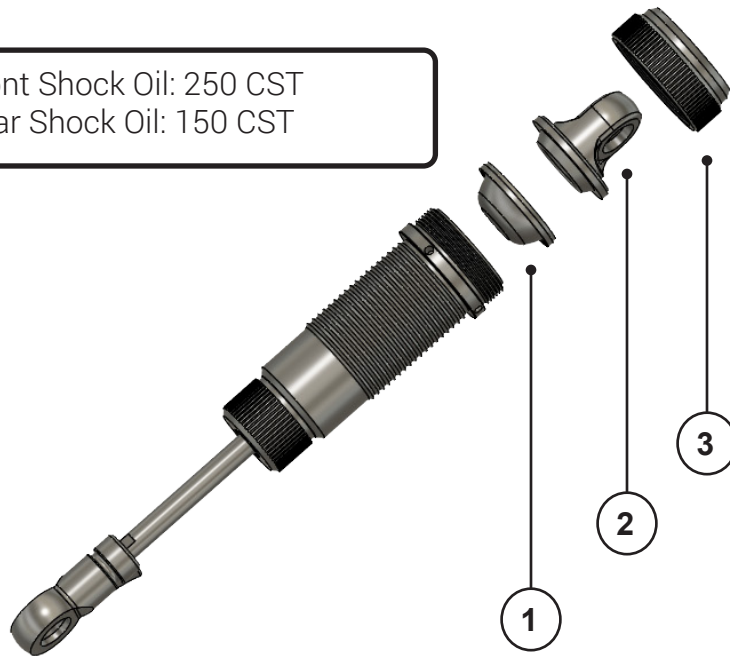


Assembly	Item Number	Name	Quantity
1	KVS445	ShockShaft	1
2	KV3381	Washer6x12x1.6	1
3	KV8851	KV5-ShockPiston	1
4	KV3334	LockNut6	1
5	KV8854	KV5-ShockShaftEnd	1



SHOCK MAINTANENCE

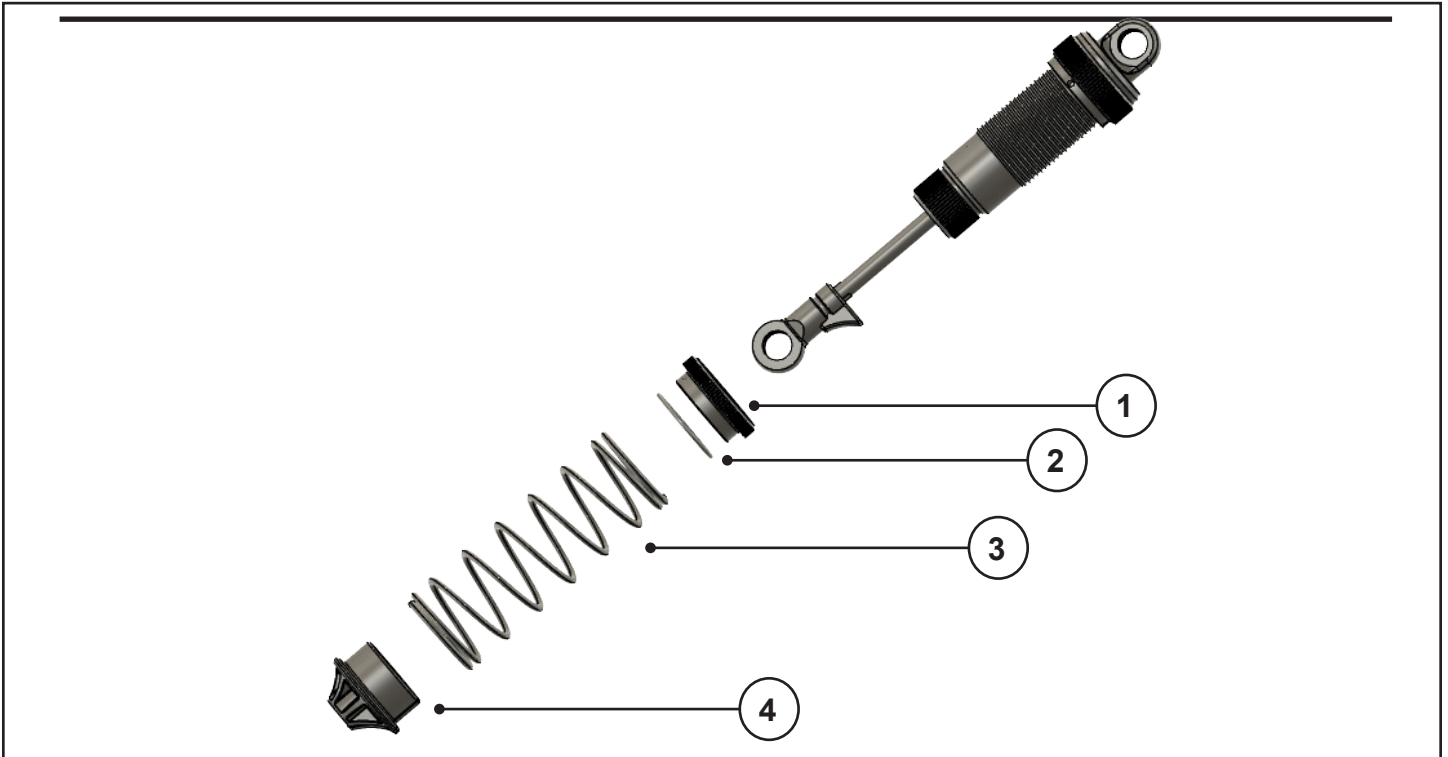
Front Shock Oil: 250 CST
Rear Shock Oil: 150 CST



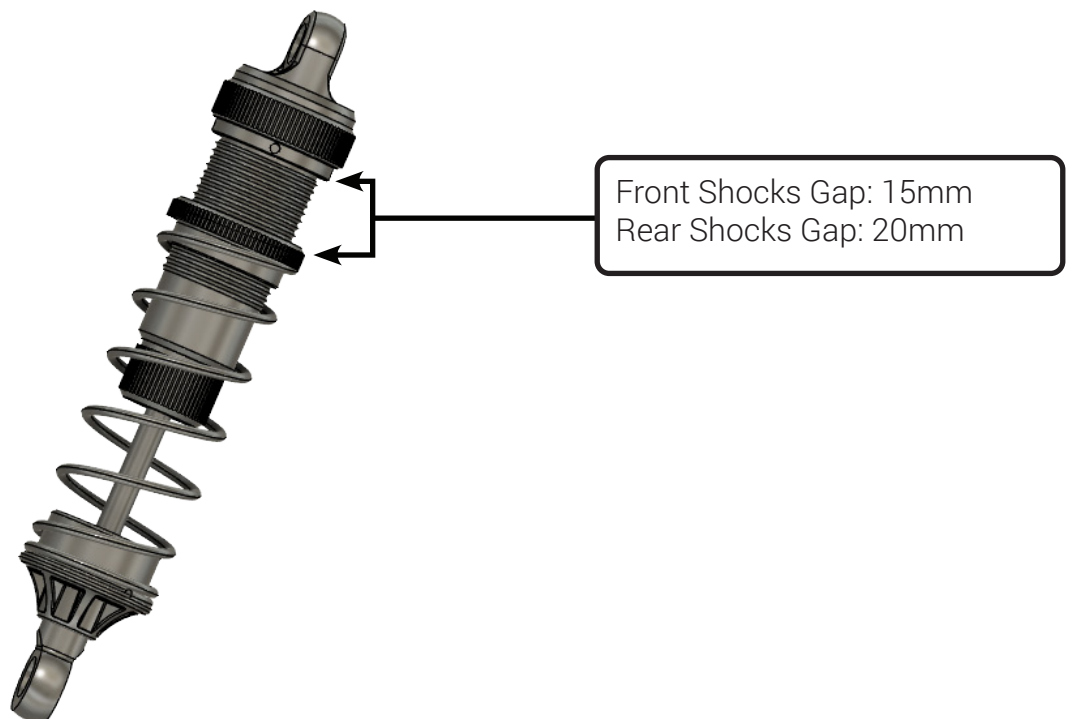
Assembly	Item Number	Name	Quantity
1	KV4433	KV5-ShockDiaphragm	1
2	KV8855	KV5-ShockTopEnd	1
3	KV5548	KV5-ShockTopCap	1



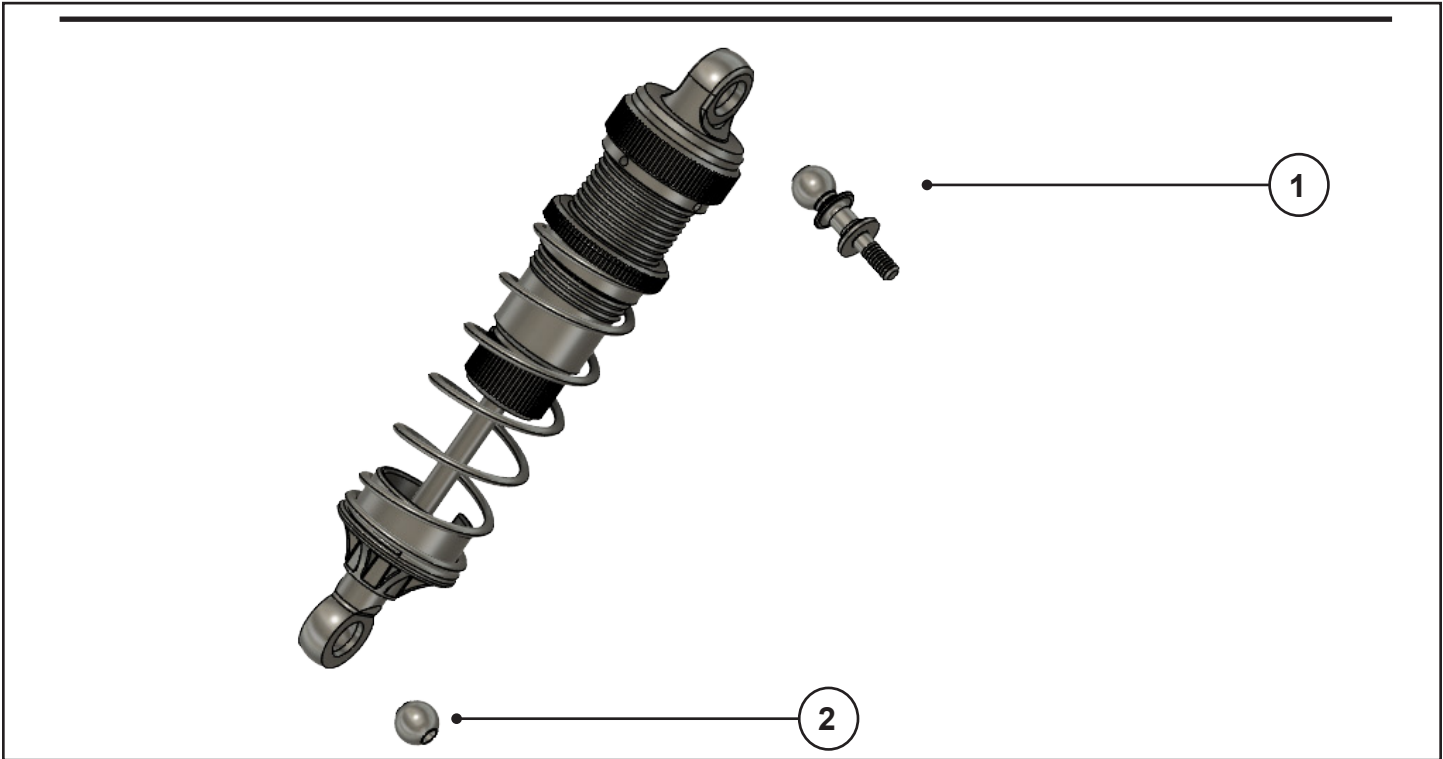
SHOCK MAINTANENCE



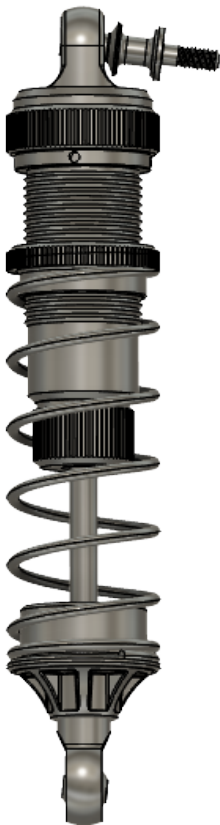
Assembly	Item Number	Name	Quantity
1	KV5560	KV5-ShockSpringAdjustingRing	1
2	KV3302	ORing33.5x2,S34(NBR70)	1
3	KV5561	KV5-FrontShockSpring	1
4	KV8850	KV5-ShockSpringPerch	1



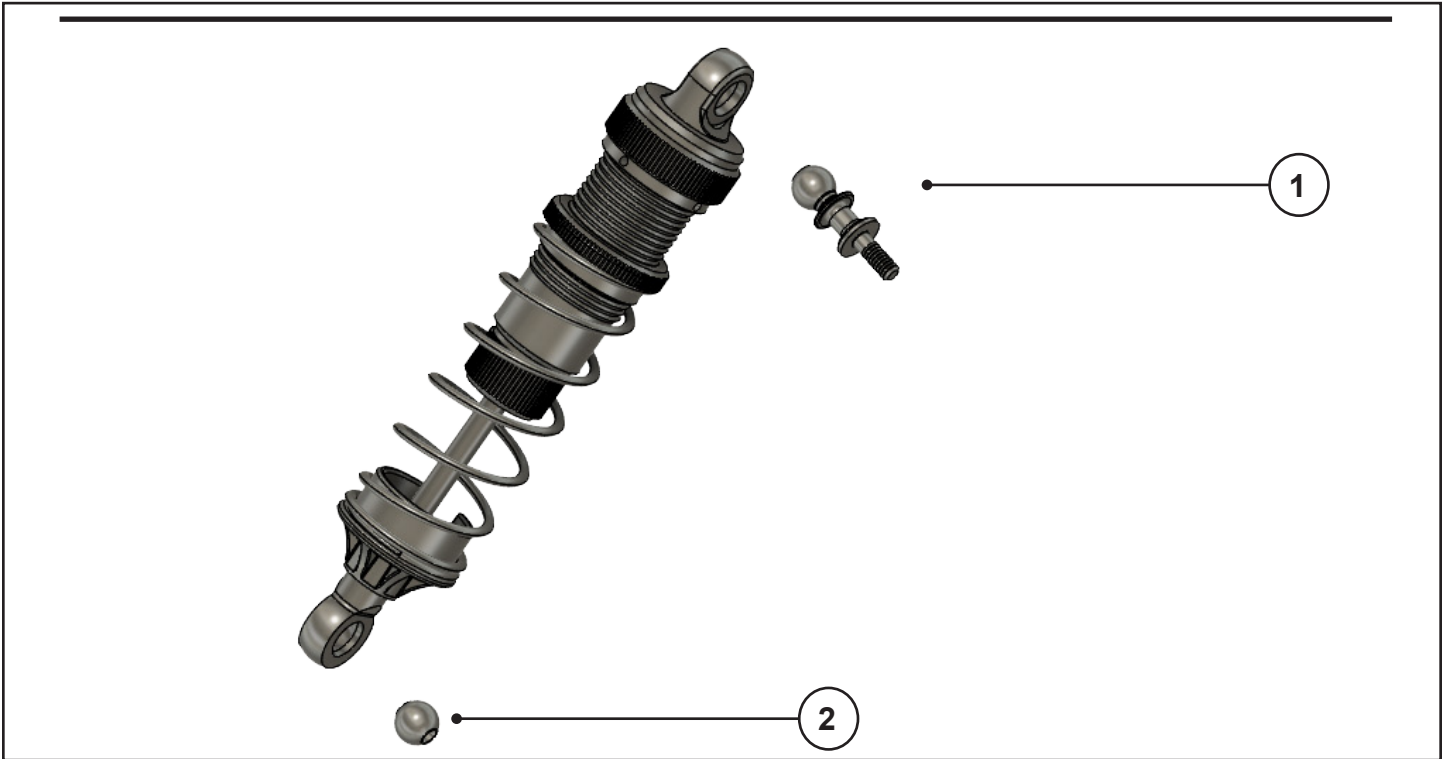
SHOCK MAINTANENCE



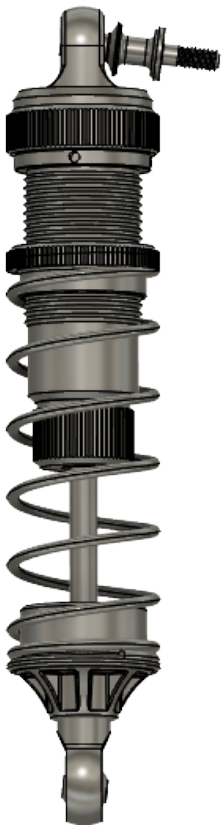
Assembly	Item Number	Name	Quantity
1	KV5509	KV5-ShockStand	1
2	KV5508	KV5-Ball13.8x5	1



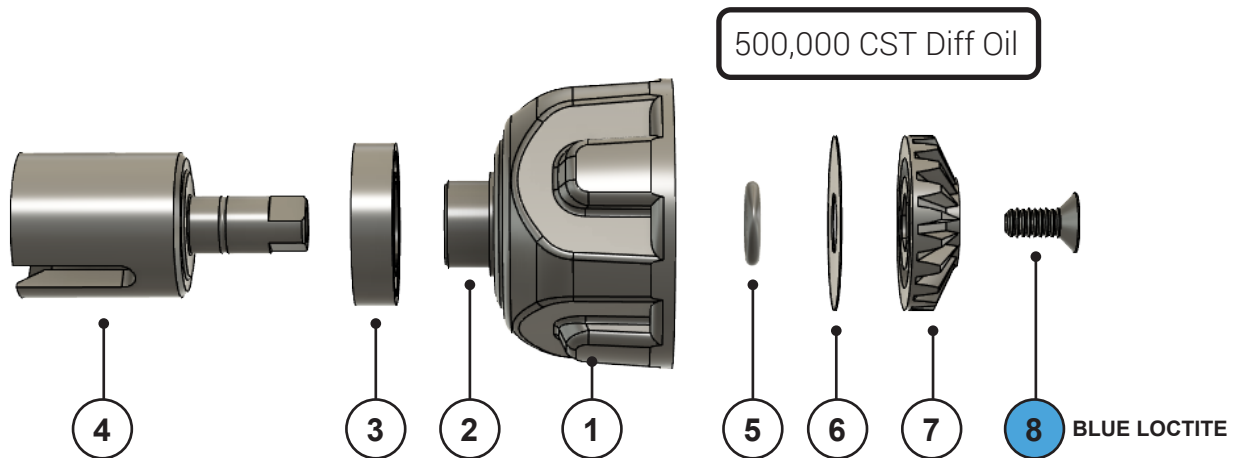
SHOCK MAINTANENCE



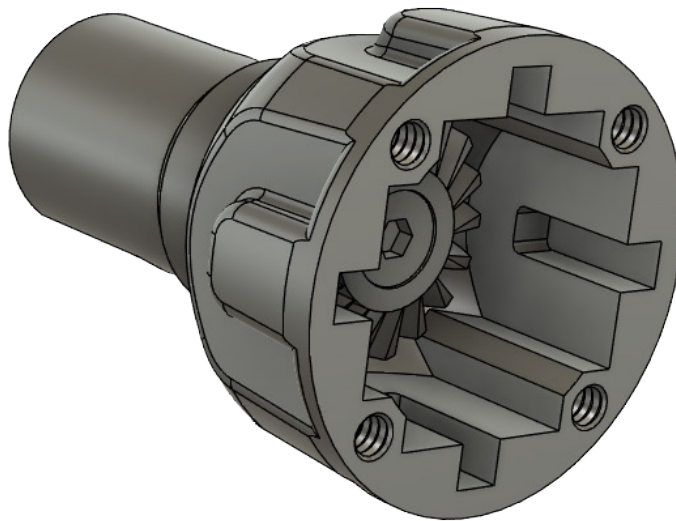
Assembly	Item Number	Name	Quantity
1	KV5509	KV5-ShockStand	1
2	KV5508	KV5-Ball13.8x5	1



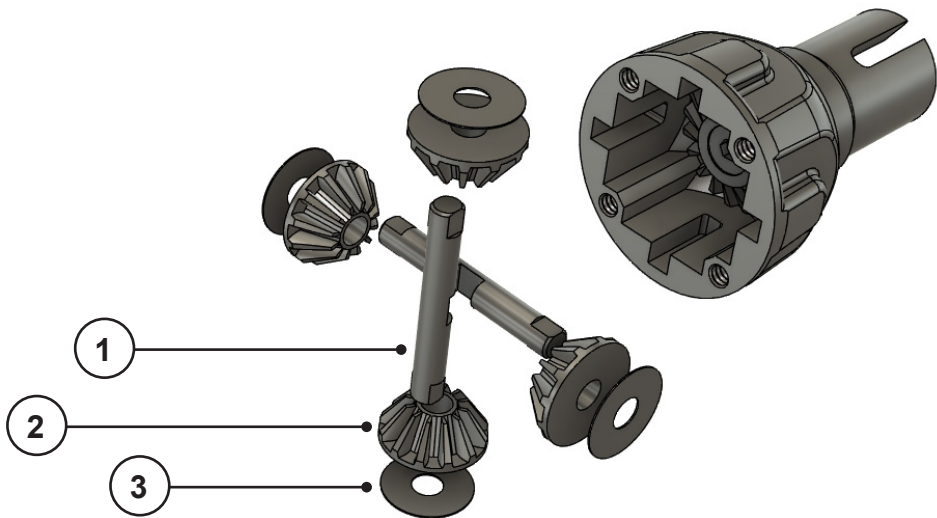
DIFFERENTIAL MAINTANENCE



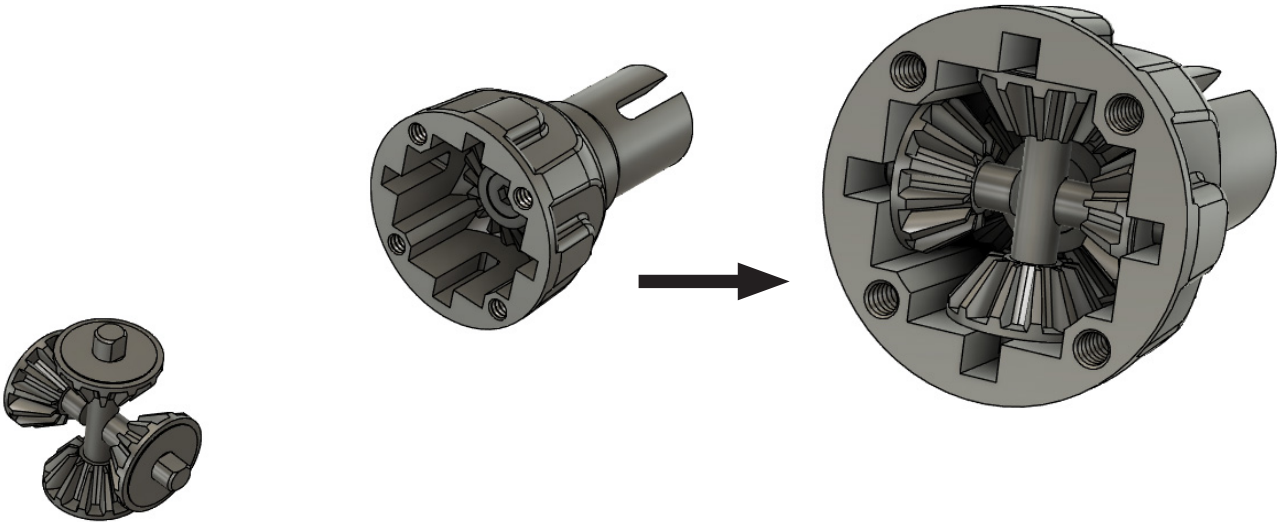
Assembly	Item Number	Name	Quantity
1	KV4436	KV5-DiffCase	1
2	KV4437	KV5-DiffCaseBushing (Pressed inside 2702288)	1
3	KV3317	Bearing15x28x7	1
4	KV5547	KV5-DiffOutDriver	1
5	KV3304	ORing9.8x2.4,P10A(NBR70)	1
6	KV4428	KV5-DiffWasher10x30x03	1
7	KV4425	DiffBevelSunGear	1
8	KV3365	ScrewFH5x12	1



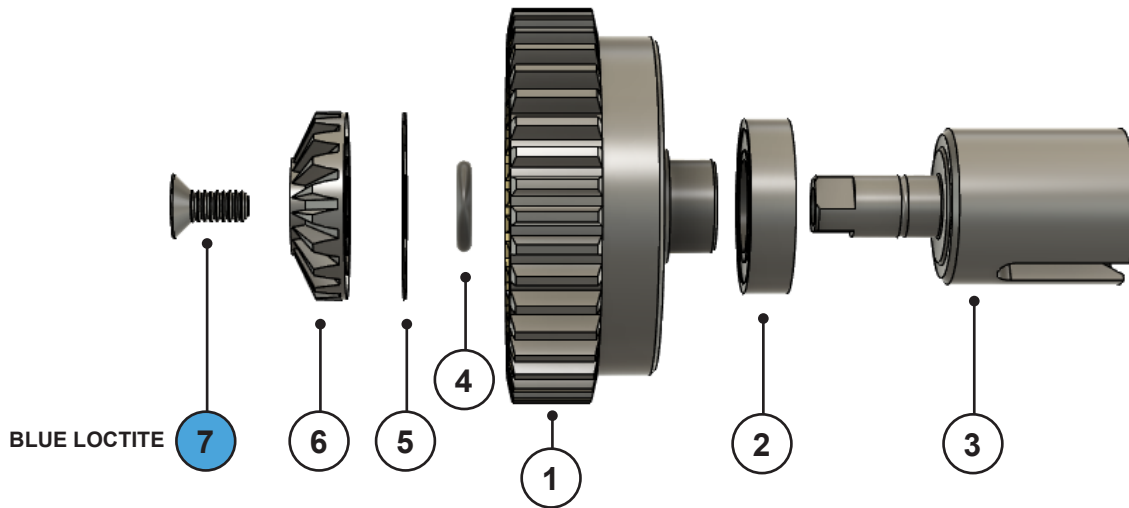
DIFFERENTIAL MAINTANENCE



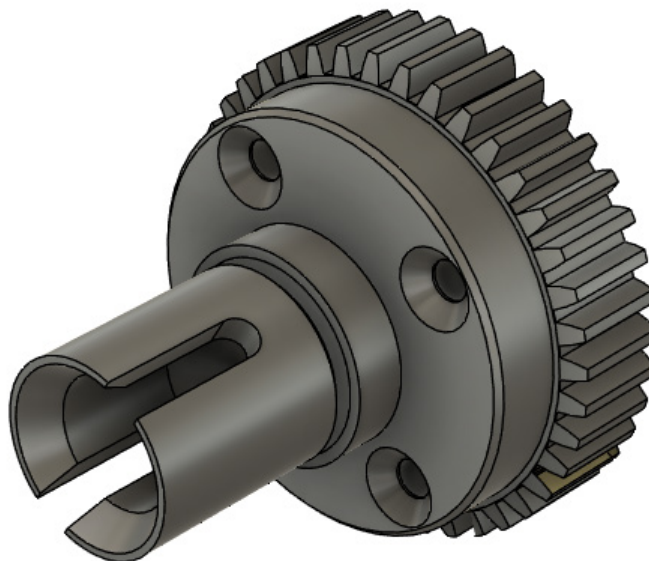
Assembly	Item Number	Name	Quantity
1	KV5546	KV5-DiffCrossPin	2
2	KV4426	DiffBevelPlanetGear	4
3	KV4429	KV5-DiffWasher6x18x03	4



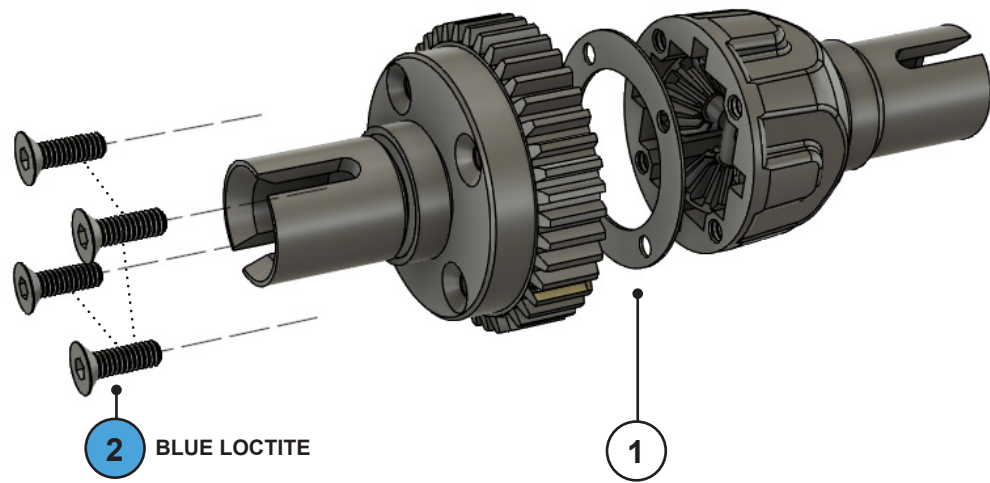
DIFFERENTIAL MAINTANENCE



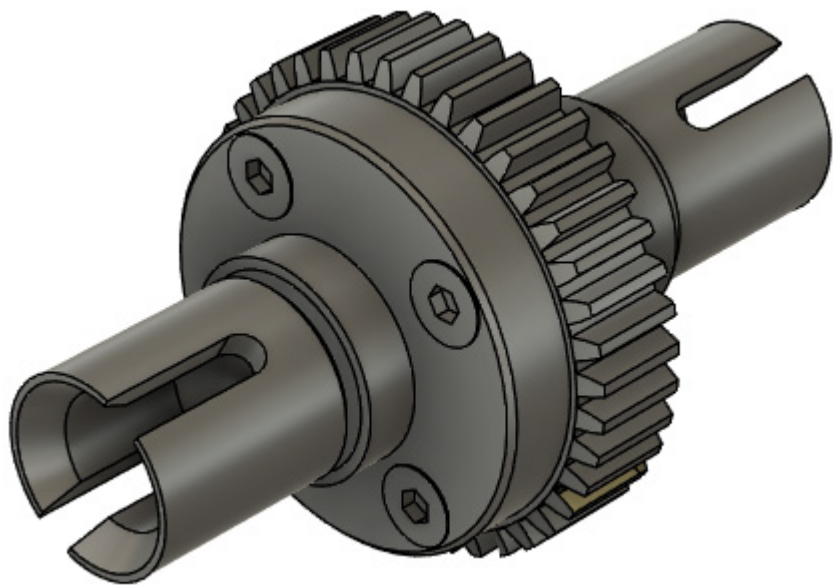
Assembly	Item Number	Name	Quantity
1	KVS472	DiffRingGear	1
2	KV3317	Bearing15x28x7	1
3	KV5547	KV5-DiffOutDriver	1
4	KV3304	ORing9.8x2.4,P10A(NBR70)	1
5	KV4428	KV5-DiffWasher10x30x03	1
6	KV4425	DiffBevelSunGear	1
7	KV3365	ScrewFH5x12	1



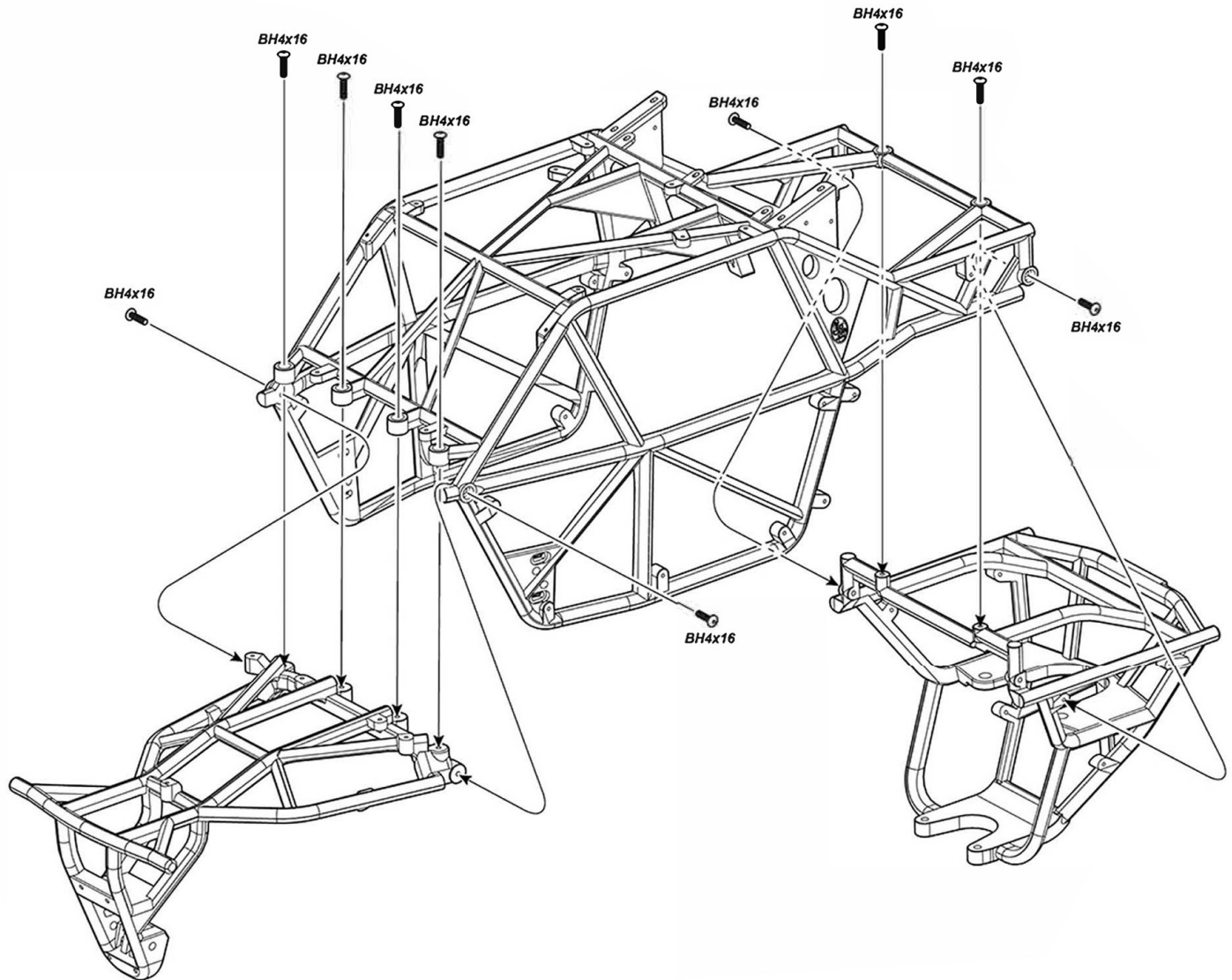
DIFFERENTIAL MAINTANENCE



Assembly	Item Number	Name	Quantity
1	KV4427	KV5-DiffGasket	1
2	KV3366	ScrewFH5x16	4

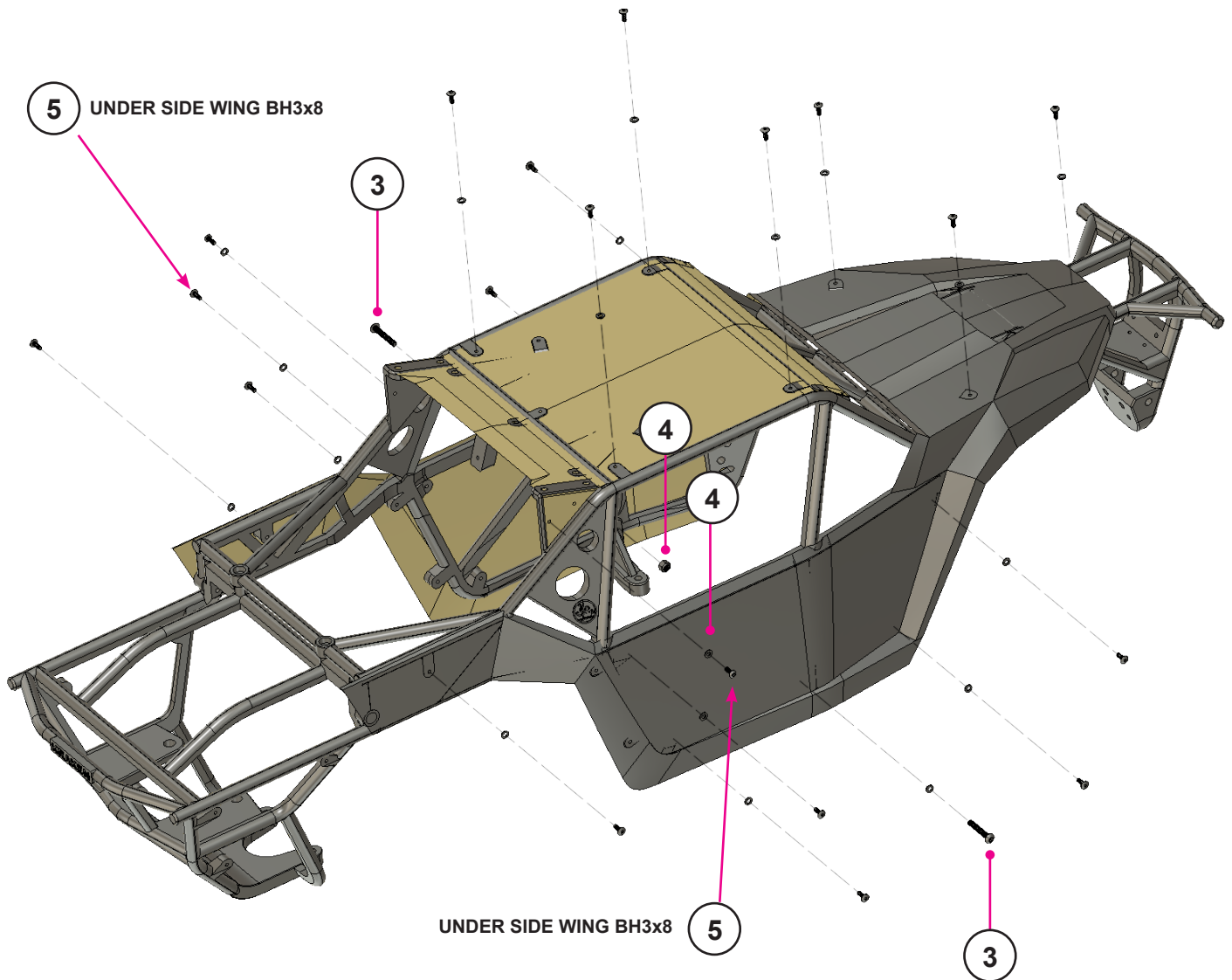


ROLL CAGE ASSEMBLY



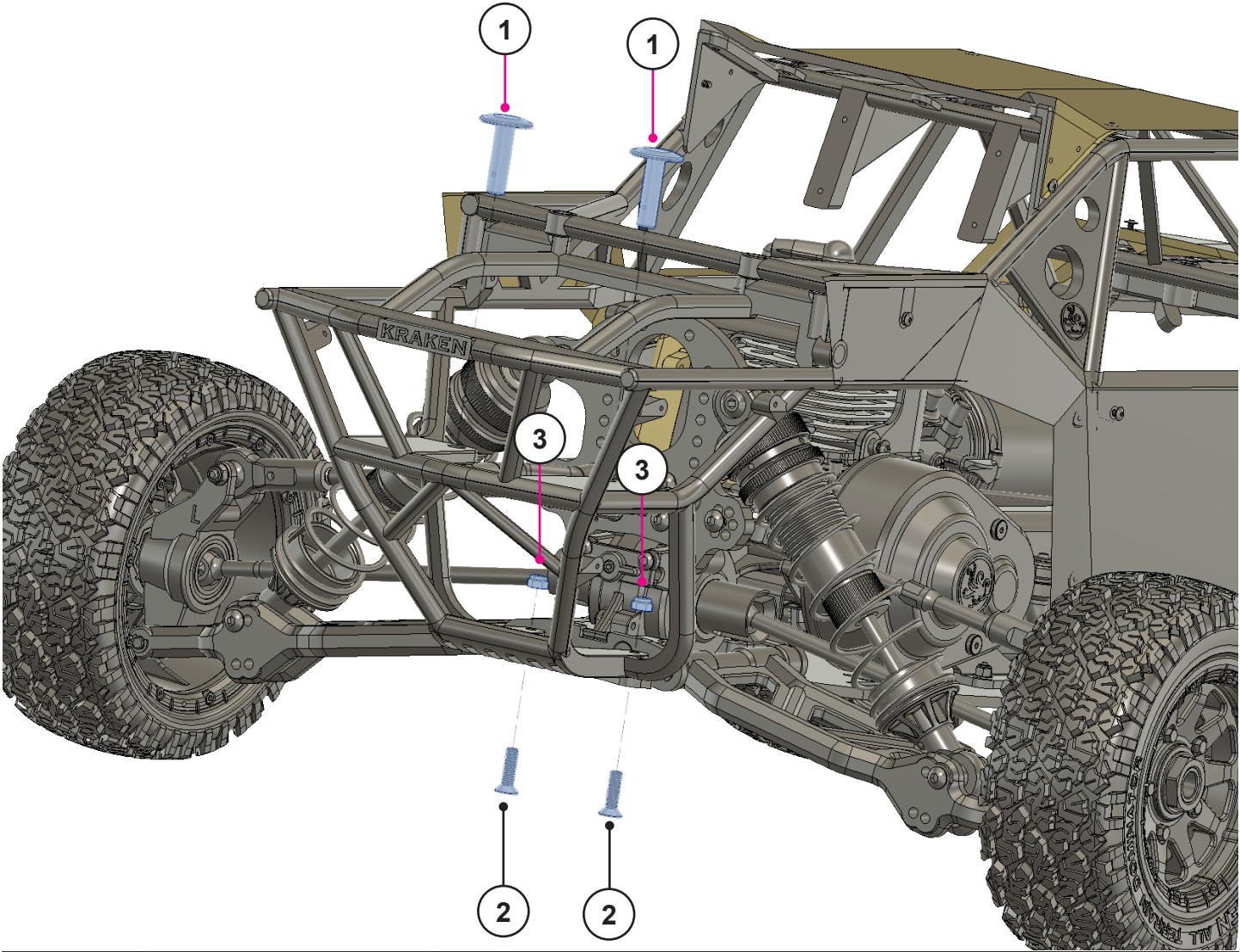
Assembly	Item Number	Name	Quantity
1	KV3340	ScrewBH4x16	10

ROLL CAGE ASSEMBLY (GAS AND ELECTRIC)

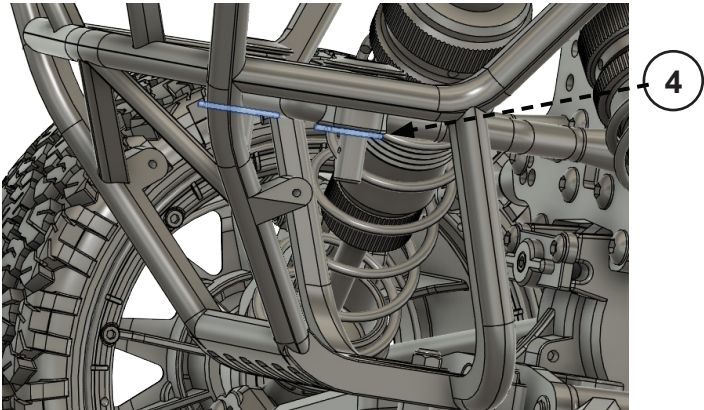


Assembly	Item Number	Name	Quantity
1	KV3343	BH3x10 (All small screws otherwise indicated)	17
2	KVS461	3x6x0.8mm Washer (All small washers otherwise indicated)	19
3	KV3360	BH4x25	2
4	KV3332	M4locknut	2
5	KV3338	BH3x8	2

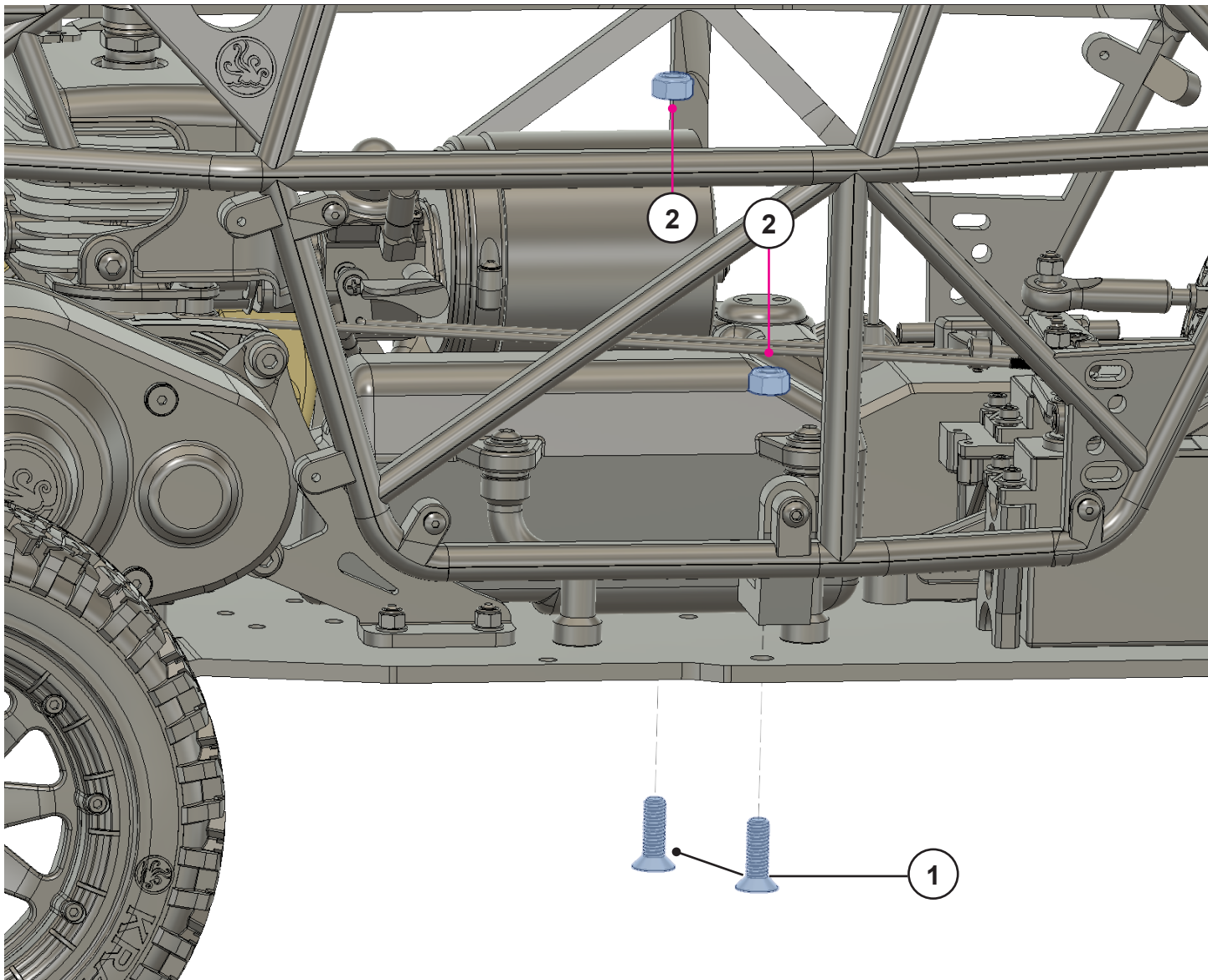
ROLL CAGE ASSEMBLY (GAS AND ELECTRIC)



Assembly	Item Number	Name	Quantity
1	KV3643	Vesla Pins	2
2	KV3367	FH5x20	2
3	KV3333	M5locknut	2
4	KVS456	Pin	2

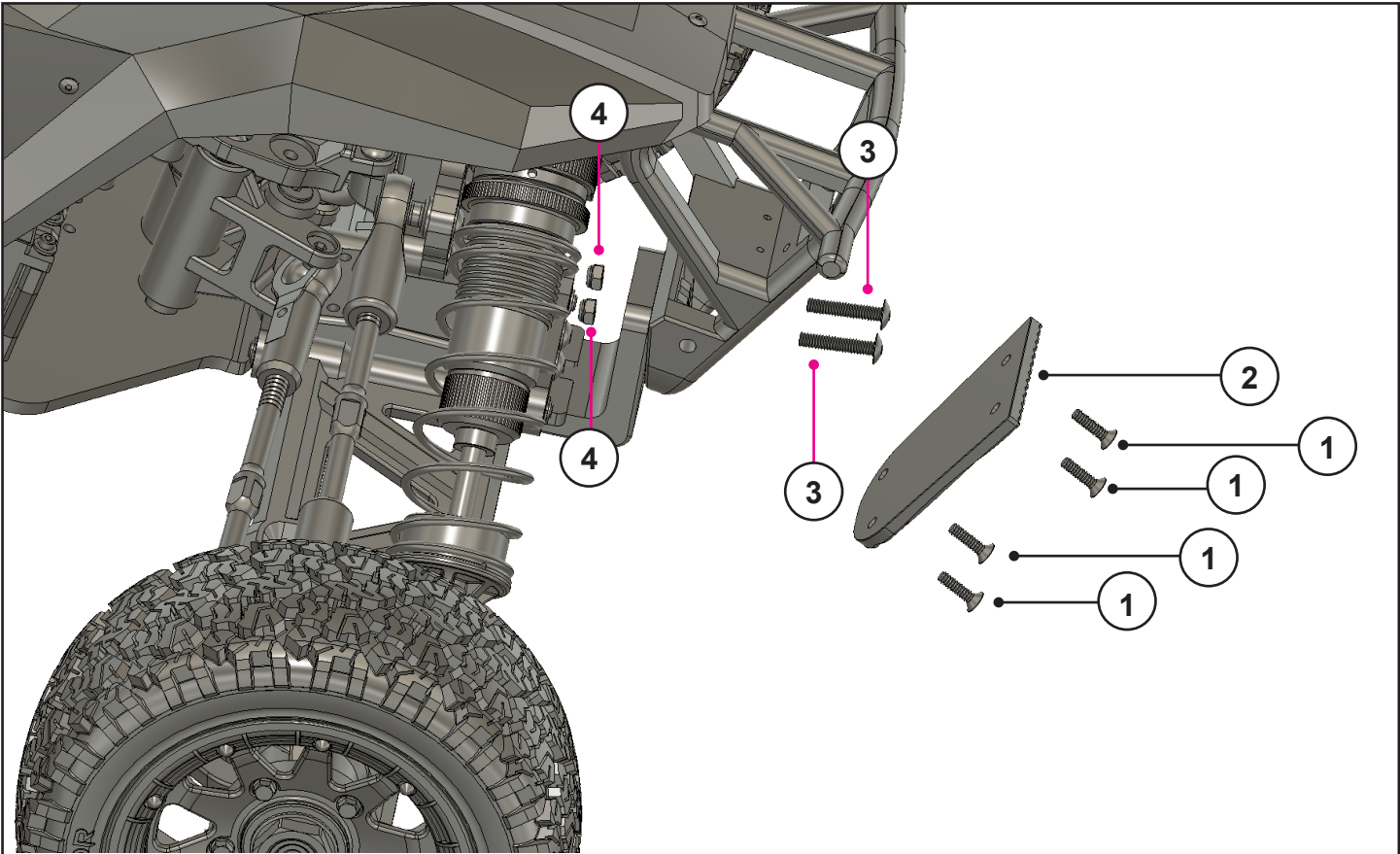


ROLL CAGE ASSEMBLY (GAS AND ELECTRIC)



Assembly	Item Number	Name	Quantity
1	KVS415	FH6x20	2
2	KV3334	M6Locknut	2

ROLL CAGE ASSEMBLY (GAS AND ELECTRIC)



Assembly	Item Number	Name	Quantity
1	KVS454	FH4x15	4
2	KV3641	VESLA.5 Rollcage Brace	1
3	KV3456	BH5x30	2
4	KV3333	M5lockNut	2



KRAKEN RC, INC. CALIFORNIA, USA.
WWW.KRAKENRC.COM